

A large, stylized white 'V' logo on a blue background. The 'V' is composed of two parallel diagonal lines that meet at a point at the bottom. The right side of the 'V' is filled with a white, curved, brush-stroke-like shape that extends upwards and to the right.

# VISTA

---

## GL TAFT

## PROJECT BRIEF

# PROJECT INFORMATION



PROJECT NAME  
**Vista GL Taft**

ADDRESS  
**1344 Taft Avenue, Ermita, Manila**

LOT AREA  
**964.40 sqm.**

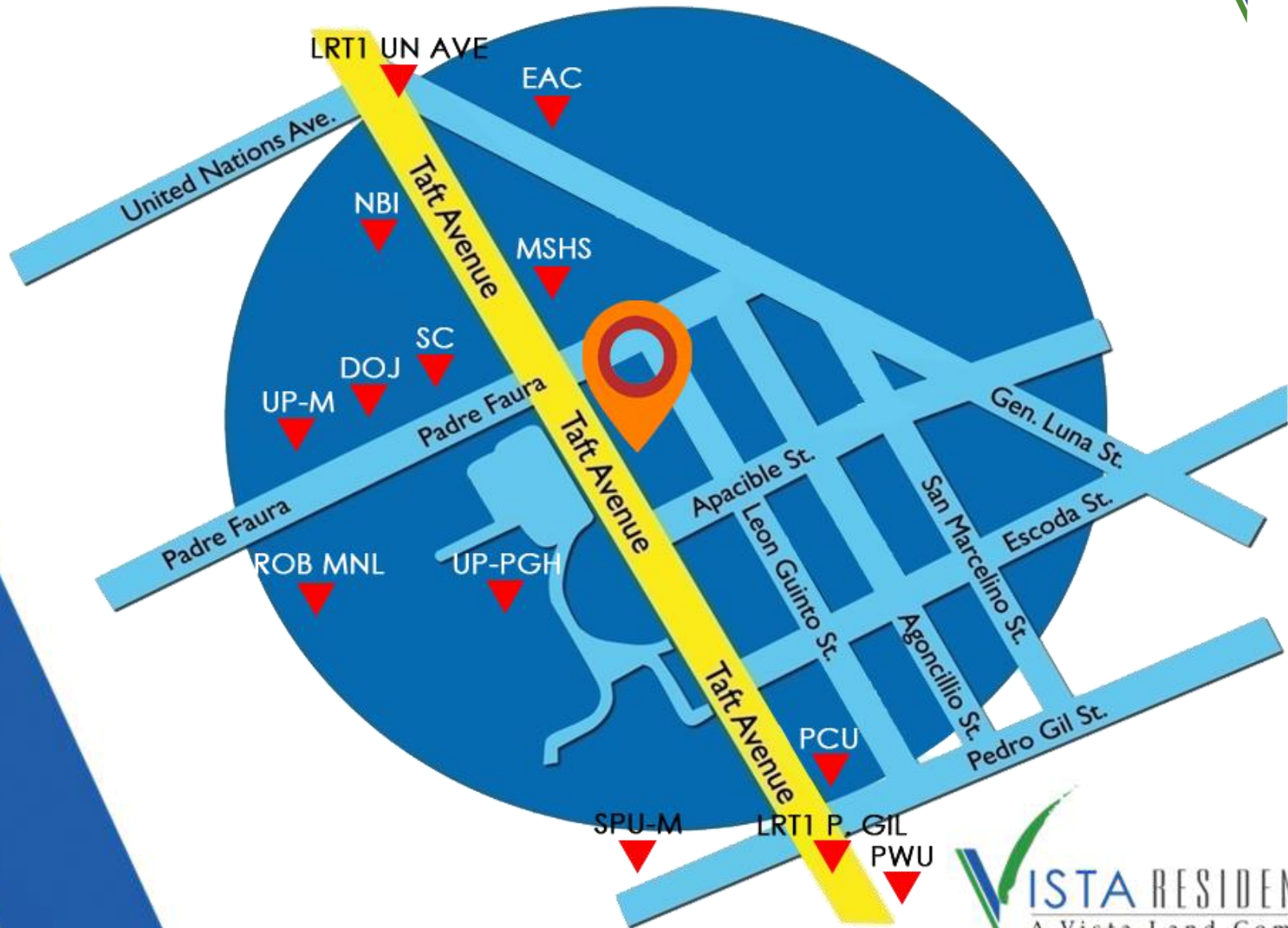
JV PARTNER  
**Santiago Syjuco Inc.**

NO. OF FLOORS  
**42 Storeys**

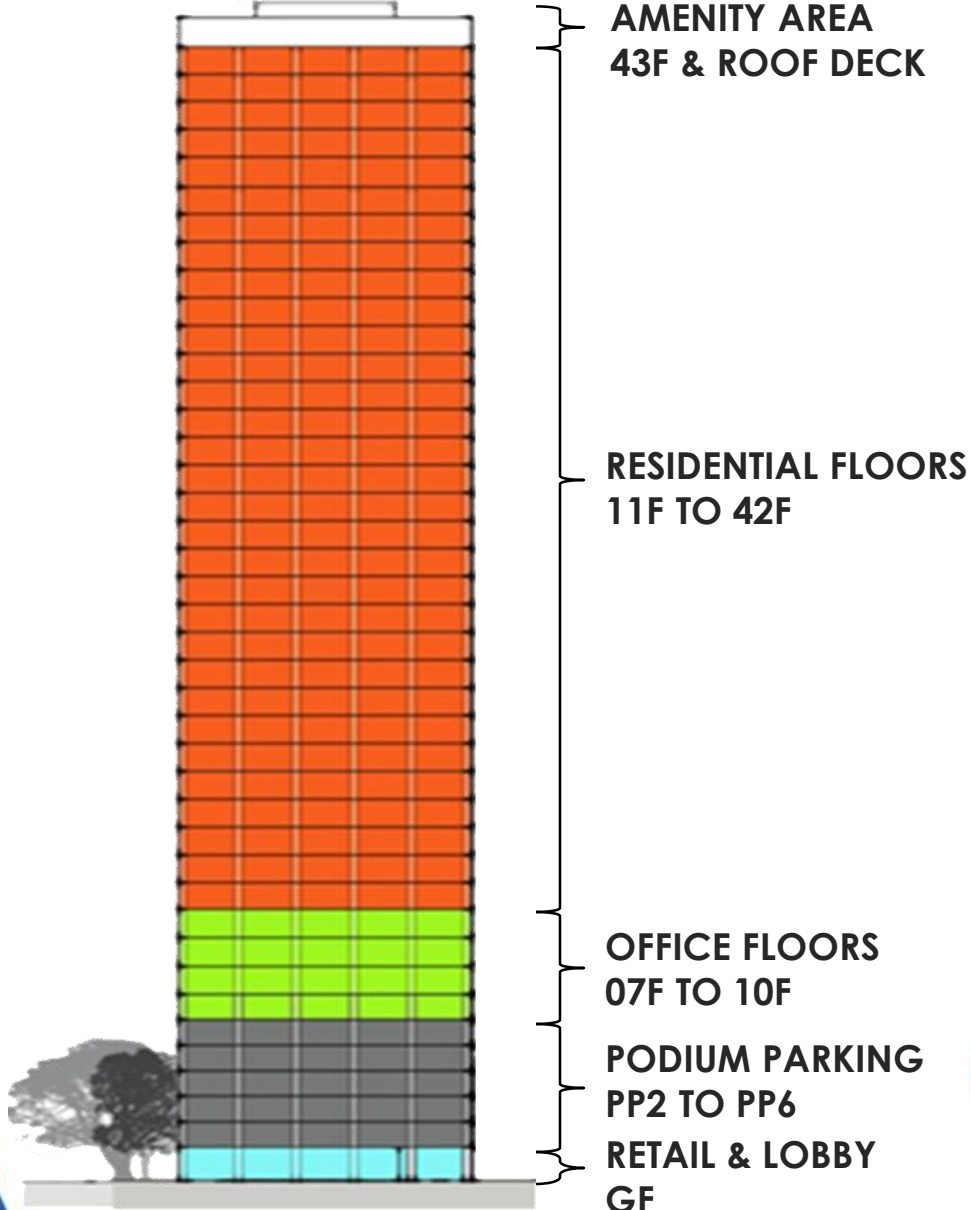
NO. OF UNITS  
**23 Units / Floor**



# LOCATION MAP



# STACKING DIAGRAM

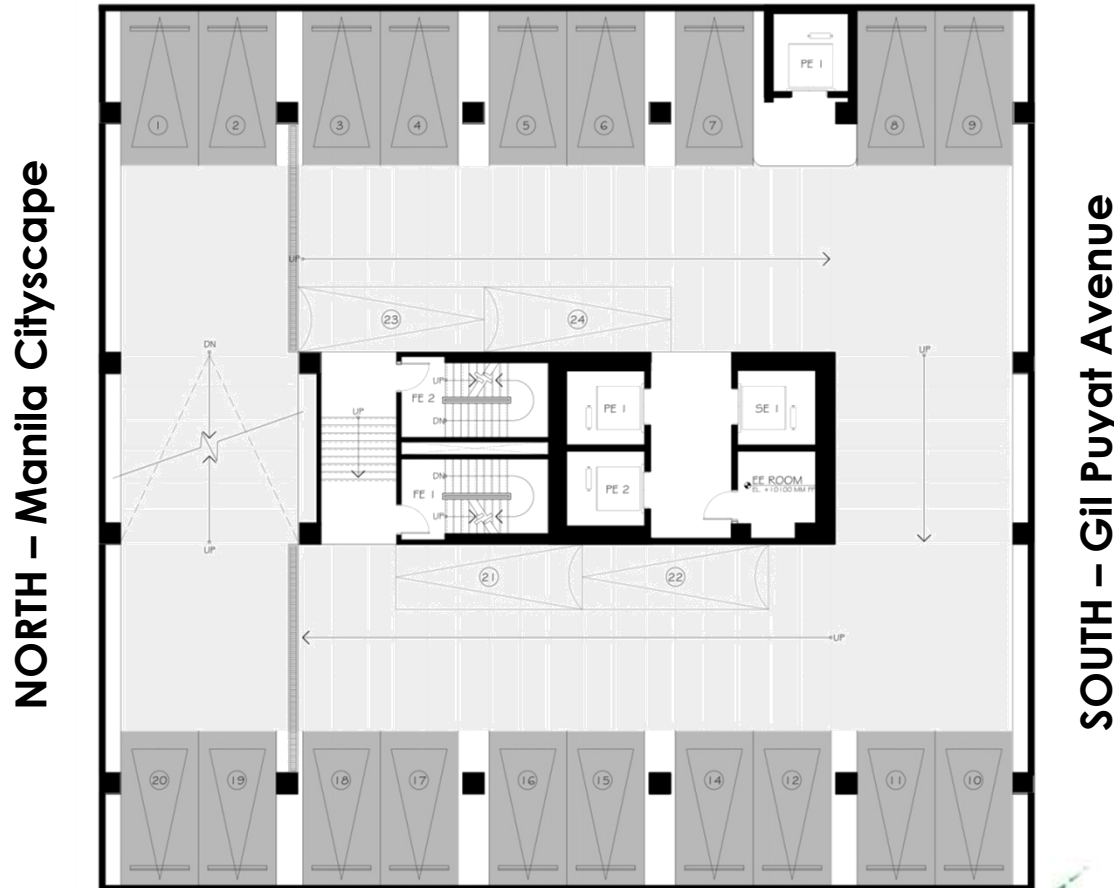


# PARKING FLOOR LAYOUT

PP2 TO PP6



EAST – Makati Skyline



NORTH – Manila Cityscape

SOUTH – Gil Puyat Avenue

WEST – Taft Avenue



# OFFICE FLOOR LAYOUT

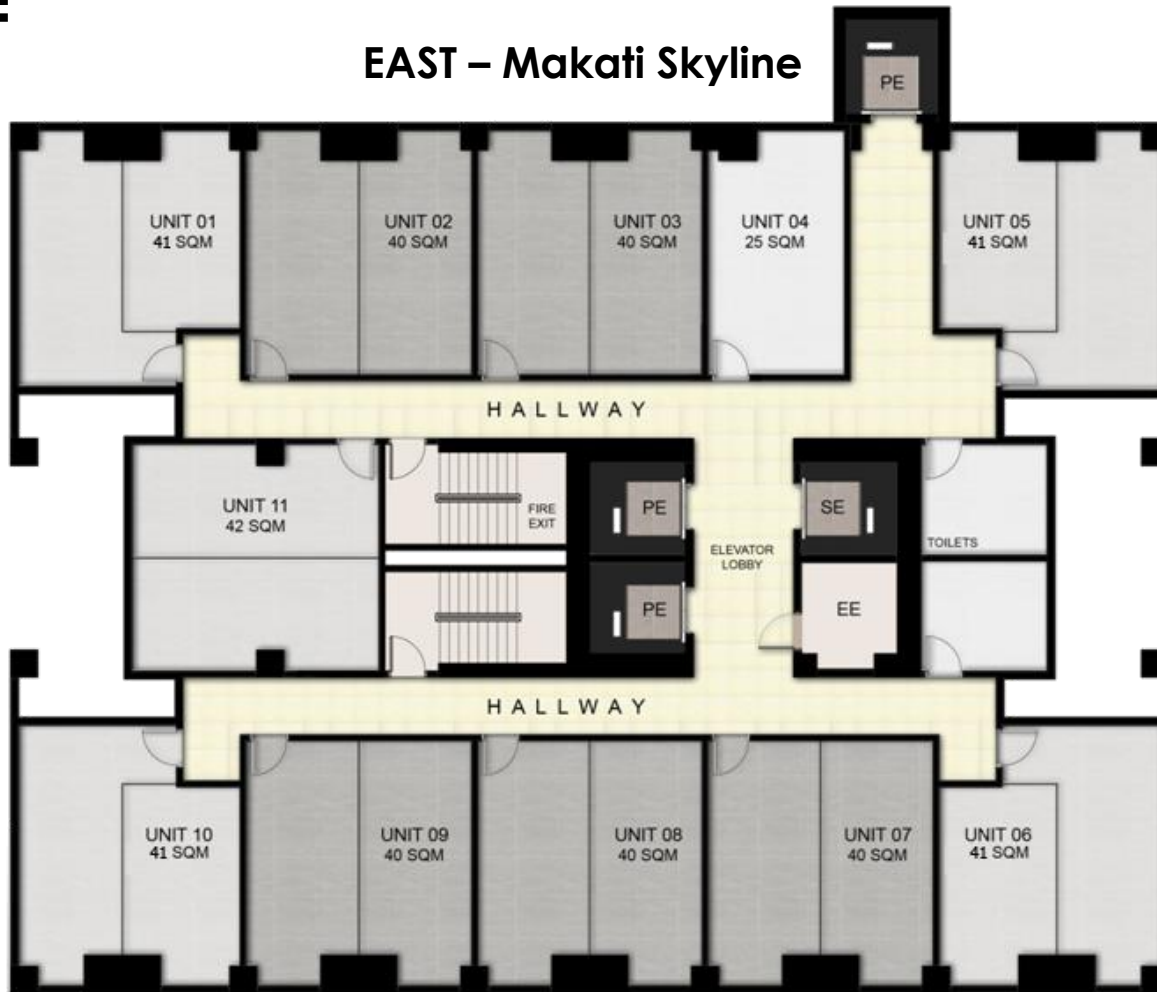
07F TO 10F



EAST – Makati Skyline

NORTH – Manila Cityscape

SOUTH – Gil Puyat Avenue



WEST – Taft Avenue



# RESIDENTIAL FLOOR LAYOUT

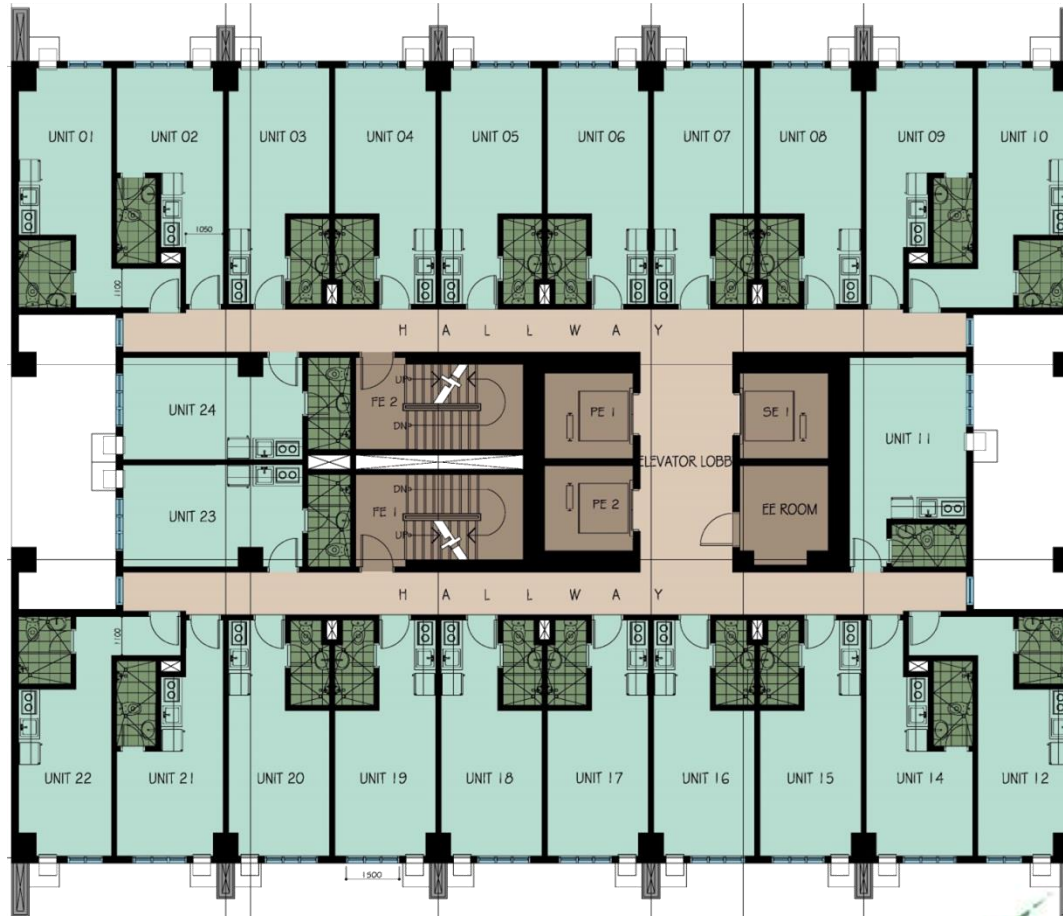
11F TO 42F



EAST – Makati Skyline

NORTH – Manila Cityscape

SOUTH – Gil Puyat Avenue



WEST – Taft Avenue



# UNIT LAYOUT



**STUDIO-TYPE UNIT**  
21 SQM





# UNIT LAYOUT



**1-BUNK BED DORM-TYPE UNIT**  
21 SQM



# UNIT DELIVERABLES



KITCHEN	
<b>FLOOR</b>	Vinyl Planks
<b>WALL</b>	Painted Finish
<b>COUNTER</b>	Granite Counter Top
<b>SINK</b>	Stainless Sink w/ Faucet
<b>CABINET</b>	Base Modular Cabinet
<b>CEILING</b>	Gypsum Board Painted Finish
<b>RANGE / COOK TOP</b>	Stub Out & Space Provision

TOILET & BATH	
<b>FLOOR</b>	Ceramic Tiles
<b>WALL</b>	Ceramic Tiles 1 Tile High (WC & Lavatory Area) 1.8m-High (Shower Area)
<b>CEILING</b>	Gypsum Board Painted Finish
<b>SHOWER</b>	Telephone
<b>LAVATORY</b>	Wall-Hung
<b>WATER CLOSET</b>	2-Piece Tank Type



# UNIT DELIVERABLES



BEDROOM / BED AREA	
<b>FLOOR</b>	Vinyl Planks
<b>WALL</b>	Painted Finish
<b>CEILING</b>	Exposed Slab, Rubbed Concrete Painted Finish
<b>CLOSET</b>	None
<b>DOOR</b>	None
<b>ACU</b>	Stub Out & Space Provision for Window-Type Unit

LIVING / DINING AREA	
<b>FLOOR</b>	Vinyl Planks
<b>WALL</b>	Painted Finish
<b>CEILING</b>	Exposed Slab, Rubbed Concrete Painted Finish
<b>ACU</b>	None

MAIN DOOR	
<b>TYPE</b>	Wooden





***STUDENT LIVING REDEFINED.***

**DELIVERY DATE  
Q4 2019**

